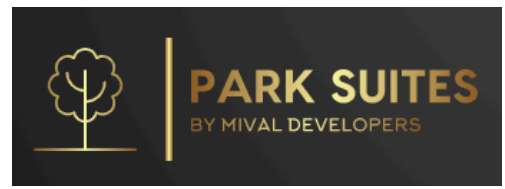




PARK SUITES
BY MIVAL DEVELOPERS





PARK SUITES offers an exceptional collection of 1 and 2 bedroom apartments. We worked with a well known architectural firm "EPI TESSERA" in order to achieve a modern ergonomic design which meets the needs of our demanding customers.

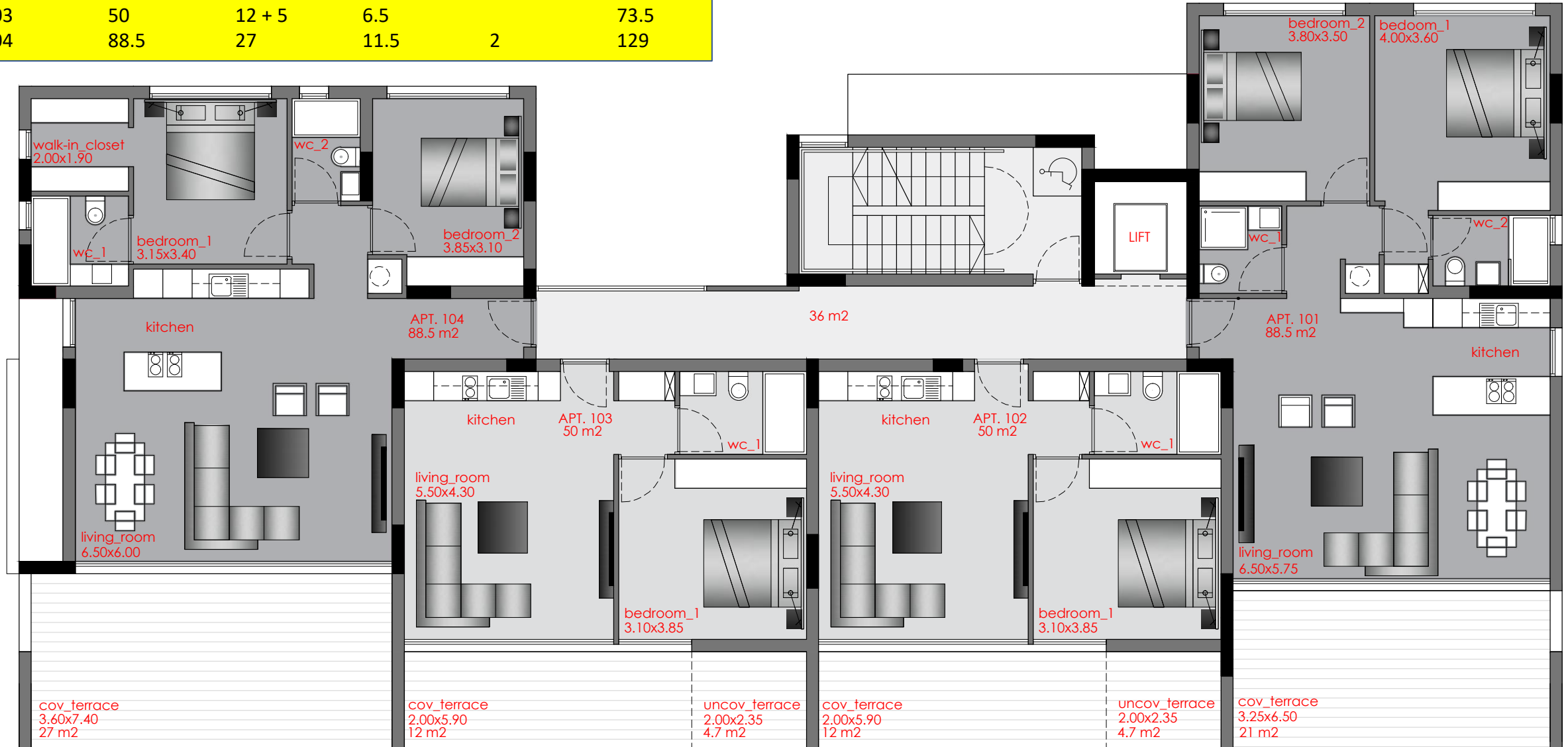
The building is spread on three floors and consists of six 1-bedroom apartments and six 2-bedroom apartments. All our luxury homes are designed and finished to the highest standard. With the use of quality material, super thermal aluminium sections and insulation on the structure of the building all flats will achieve an Energy Certificate Class A.



AREA OF APARTMENTS (sq. m.)

APT.	INTERNAL	VERANDA	COMMON	STORAGE	TOTAL
101	88.5	21	11.5	2	123
102	50	12 + 5	6.5		73.5
103	50	12 + 5	6.5		73.5
104	88.5	27	11.5	2	129

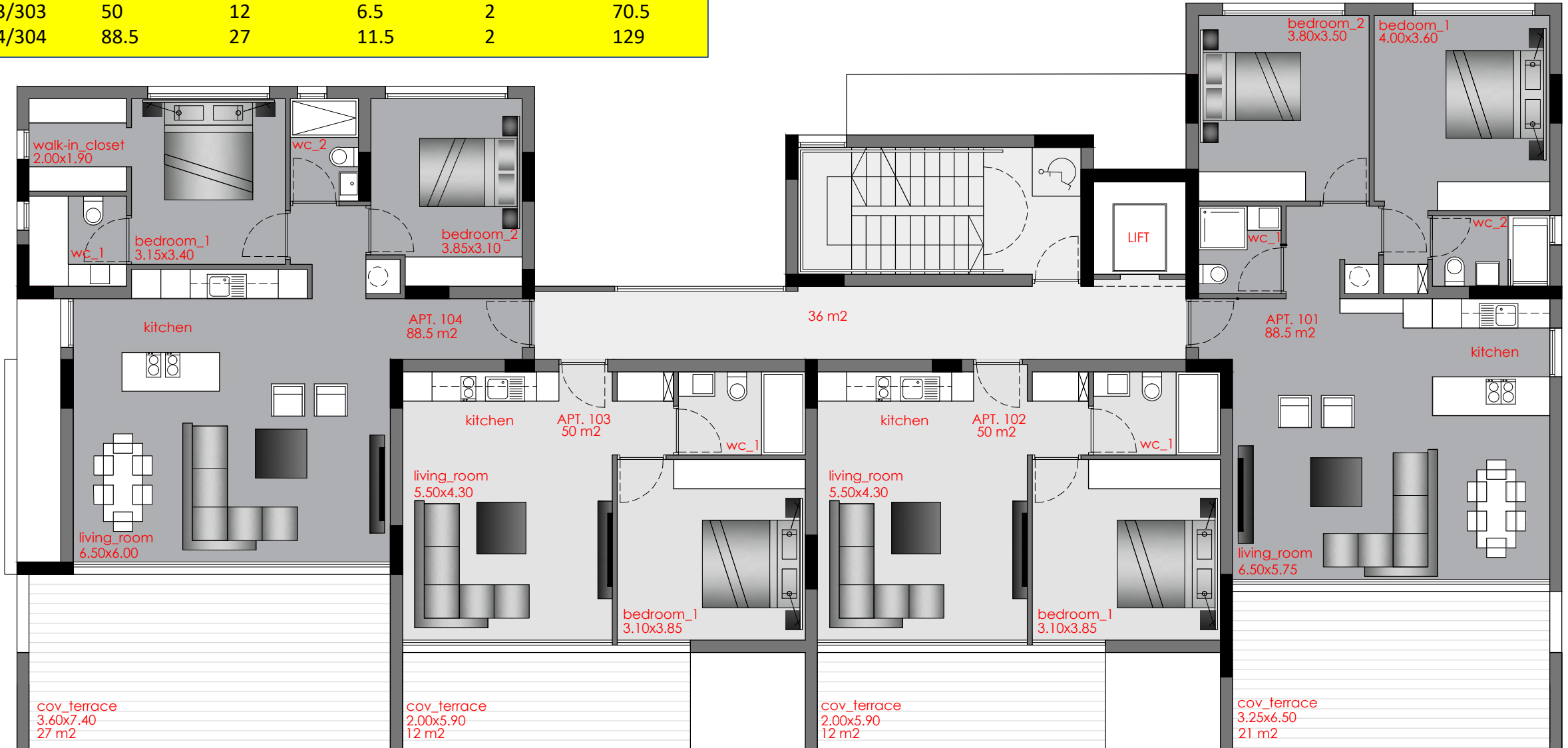
LEVEL 1



AREA OF APARTMENTS (sq. m.)

APT.	INTERNAL	VERANDA	COMMON	STORAGE	TOTAL
201/301	88.5	21	11.5	2	123
202/302	50	12	6.5	2	70.5
203/303	50	12	6.5	2	70.5
204/304	88.5	27	11.5	2	129

LEVEL 2 & 3



LEVEL 0



SIDEWALK

VEHICLE EXIT

ENTRANCE

VEHICLE ENTRANCE

PAVEMENT

ROAD









Structure and Walls

Reinforced Concrete structure according to the design of the Civil Engineer and the recent anti-seismic regulations.

External walls with high quality bricks covered by 8cm thick polystyrene thermal insulation which will cover the entire outer surface of the building including the areas of the beams and columns.

Internal Walls with 10cm thick bricks, three coats of plaster and three coats of emulsion paint.

Ceiling

Fare faced concrete with spatula finish and gypsum board where needed. Three coats of emulsion paint.

Hydraulic Installations

Pipe in Pipe hydraulic installation throughout. Each flat will have an independent water heater with solar panels and pressurized water system.

Aluminium Window and Door openings

Thermal aluminium sections on Doors and windows with double-glazing for better heat and sound insulation.

Air conditioning

Provision for the installation of A/C units in the Living/Dinning/Kitchen and all bedrooms.

Heating

Provision for the installation of Electric Heaters in the Living/Dinning/Kitchen and all bedroom and bathrooms.

Kitchen

Quality Kitchens imported from Italy to be placed in all flats. Italian countertops with Fenix placed on all kitchens

Wardrobes

Quality wardrobes imported from Italy to be placed in all flats with melamine finish.

Doors

Entrance Doors with fire rating in a variety of finishes

Inside Doors in Laminate in a variety of finishes

Electrical and telephone installation

Complete electrical installation according to the latest regulations of the Electricity Authority of Cyprus. Installation of Central terrestrial antenna in the living room and all bedrooms. Adequate number of light points and power points in every room. Telephone installation with structured cabling in Living room and bedrooms

Floor and Wall Material

- High Quality Ceramic tiles of European origin placed throughout the apartments in the living rooms, kitchen, bathrooms, and external areas
- Laminate Wood floor of European origin placed in the Bedrooms

Sanitary Fittings and Accessories

Quality Sanitary fittings and accessories

Photovoltaic System

Solar Panels will be placed on the roof of the building providing Net Metering Electricity to all 2 Bedroom flats of the project

Elevator

Luxurious High-Speed Elevator with 8-person cabin.

Entrance videophone system for monitoring main entrance.

Parking and Storage

1 covered Parking space for each apartment. Storage Rooms for 10 of the flats located on the ground floor

Technical Specifications

Floor	Flat Number	Bedrooms	Internal Area per Flat (Sq. M.)	Covered Veranda (Sq. M.)	Uncovered Veranda (Sq. M.)	Common Areas (Sq. M.)	Storage (Sq. M.)	Total Area (Sq. M.)	Price and Availability
1	101	2	88.5	21.0	0.0	11.5	2.0	123.0	Please contact us
1	102	1	50.0	12.0	5.0	6.5	0.0	73.5	Please contact us
1	103	1	50.0	12.0	5.0	6.5	0.0	73.5	Please contact us
1	104	2	88.5	27.0	0.0	11.5	2.0	129.0	Please contact us
2	201	2	88.5	21.0	0.0	11.5	2.0	123.0	Please contact us
2	202	1	50.0	12.0	0.0	6.5	2.0	70.5	Please contact us
2	203	1	50.0	12.0	0.0	6.5	2.0	70.5	Please contact us
2	204	2	88.5	27.0	0.0	11.5	2.0	129.0	Please contact us
3	301	2	88.5	21.0	0.0	11.5	2.0	123.0	Please contact us
3	302	1	50.0	12.0	0.0	6.5	2.0	70.5	Please contact us
3	303	1	50.0	12.0	0.0	6.5	2.0	70.5	Please contact us
3	304	2	88.5	27.0	0.0	11.5	2.0	129.0	Please contact us

LOCATION

Park Suites is positioned in a very quiet street in the municipality of Aglantzia offering easy access to the center of Nicosia and the major roadways and the exit from Nicosia.

The development is conveniently located close to many amenities and The University of Cyprus which is 1.3Km away and can be reached on foot.

It is also very close to the Athalassas Park

